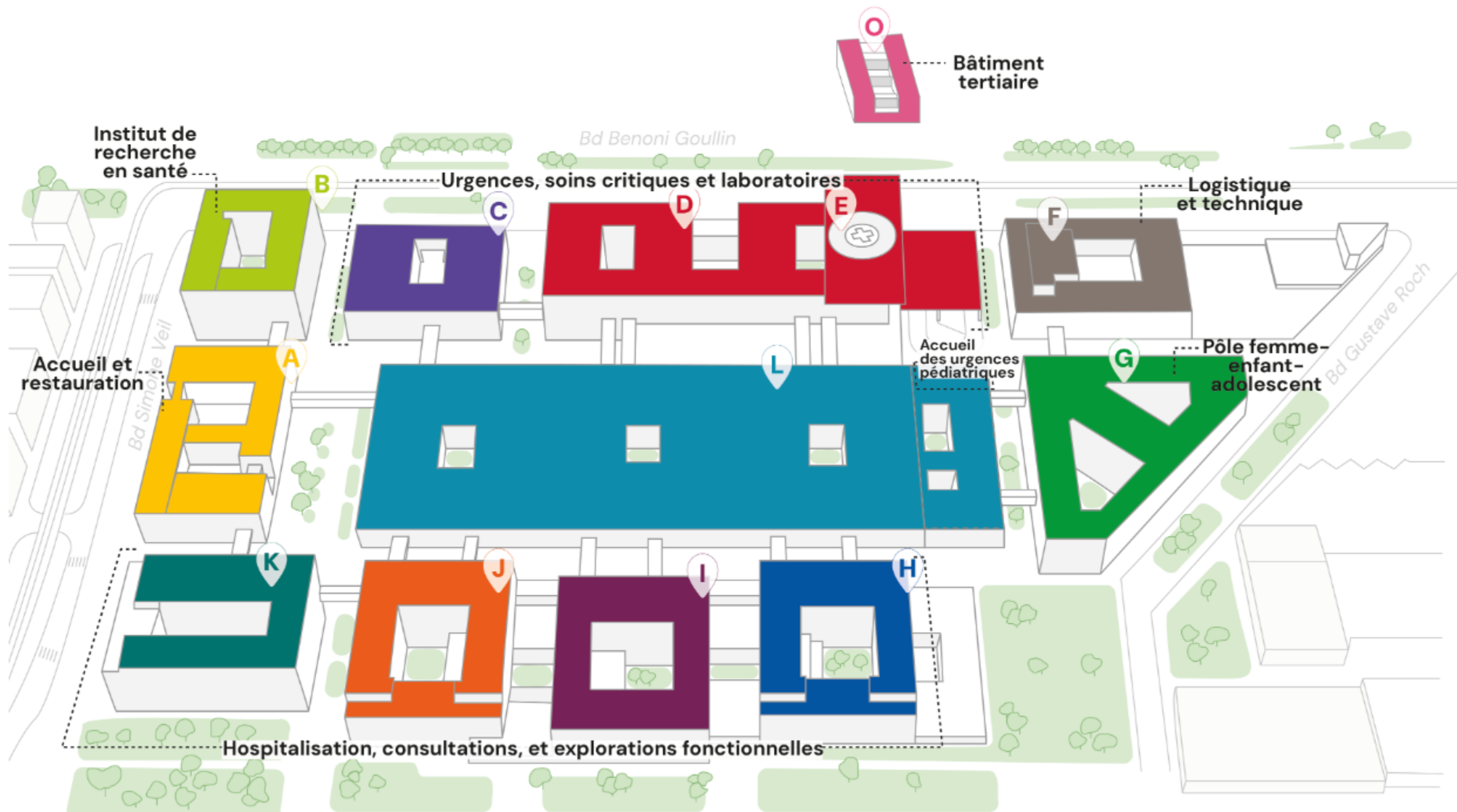




Design environnemental

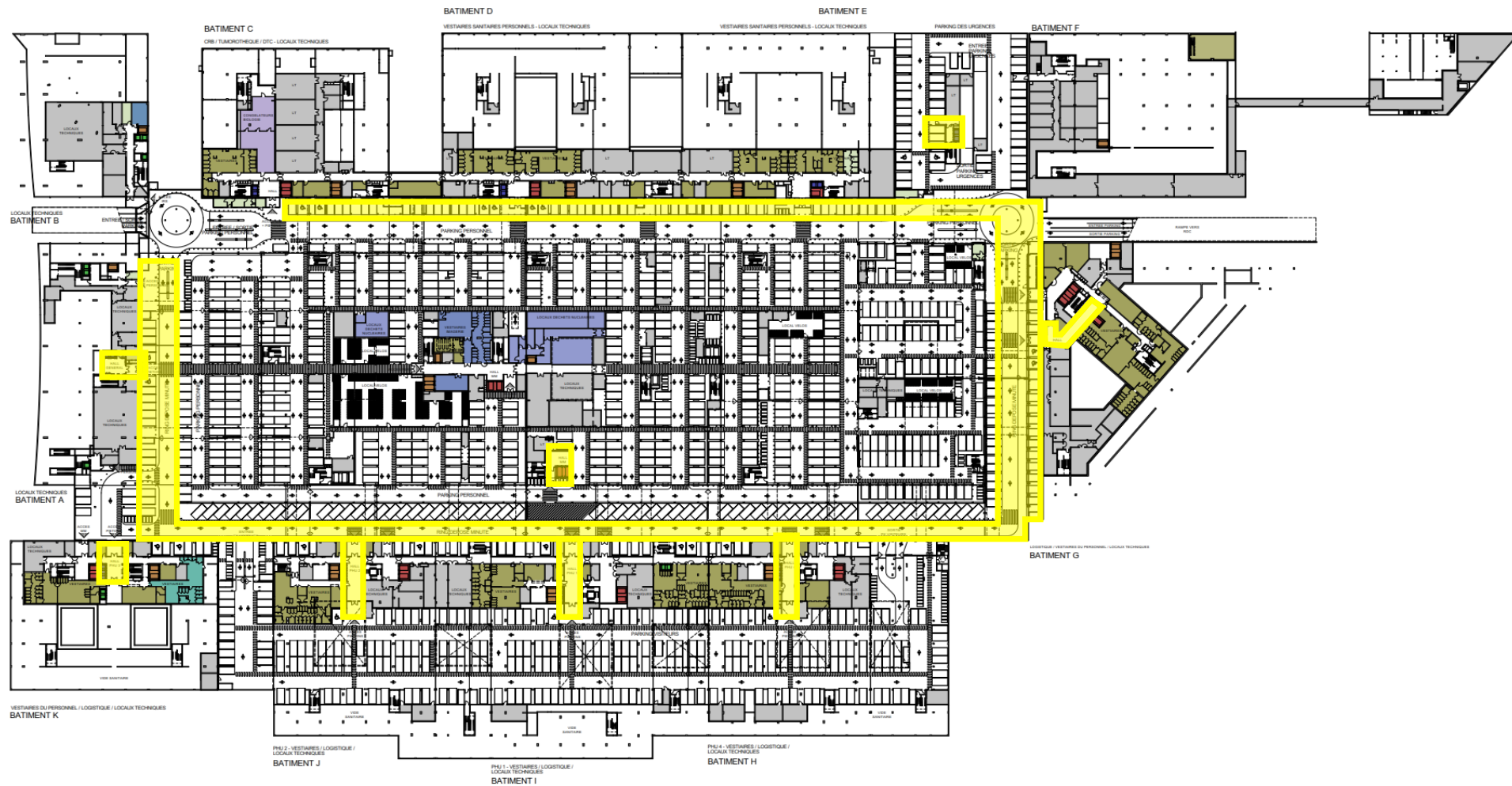
Repérage des espaces à traiter







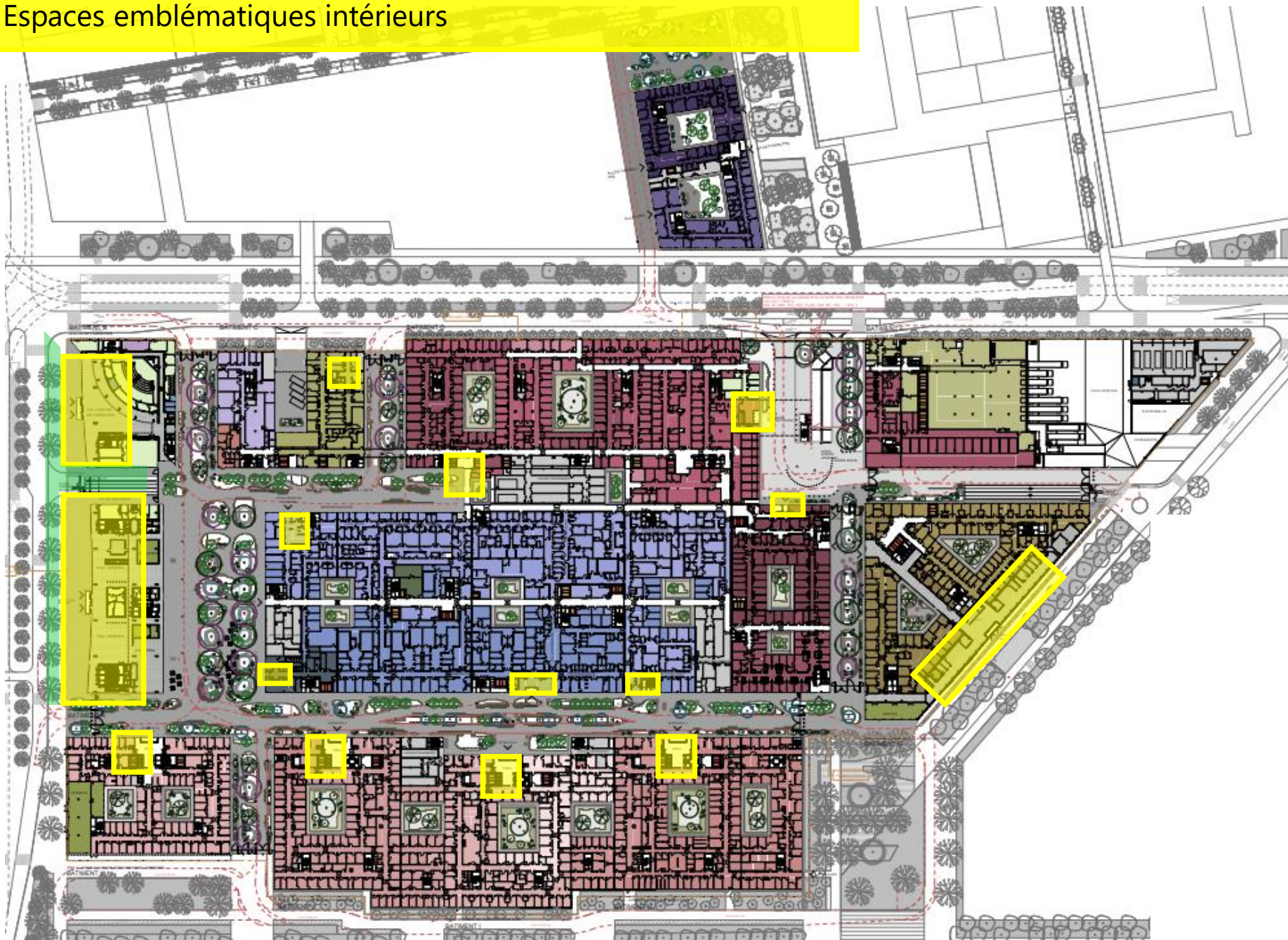
Espaces intérieurs



1. Espaces emblématiques intérieurs

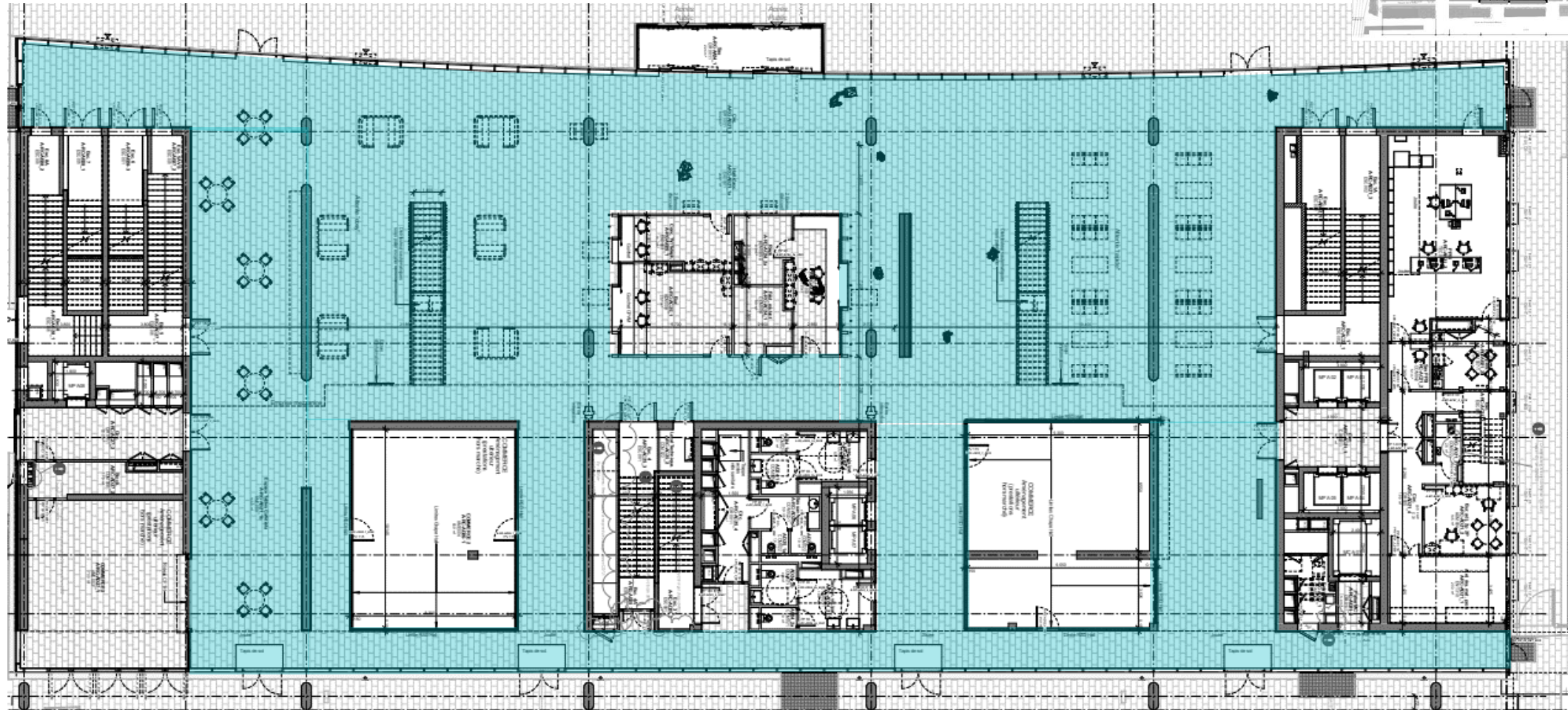
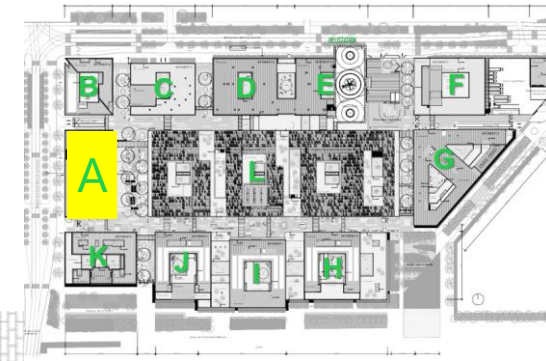
Sous-sol

1. Espaces emblématiques intérieurs

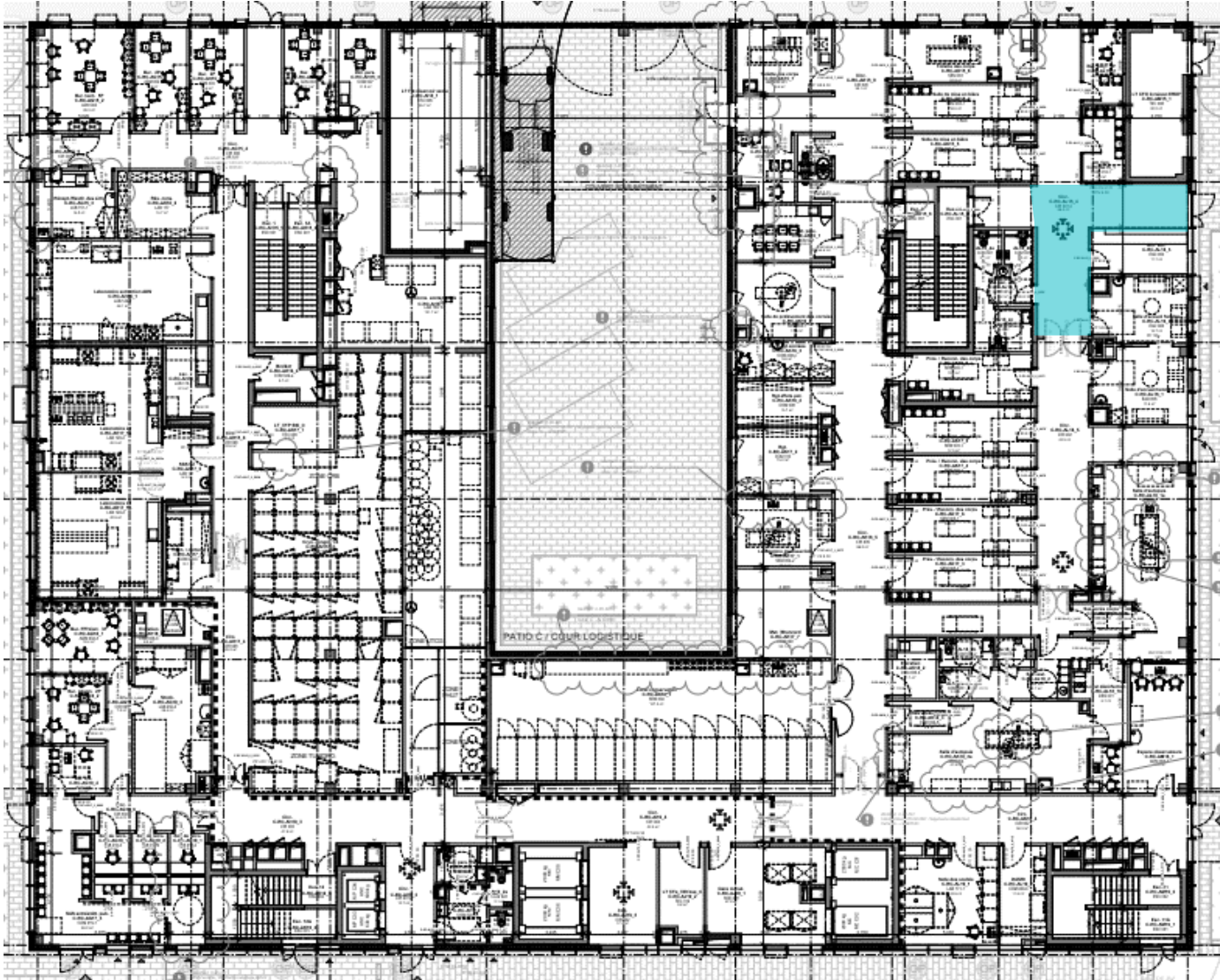


Rez-de-chaussée

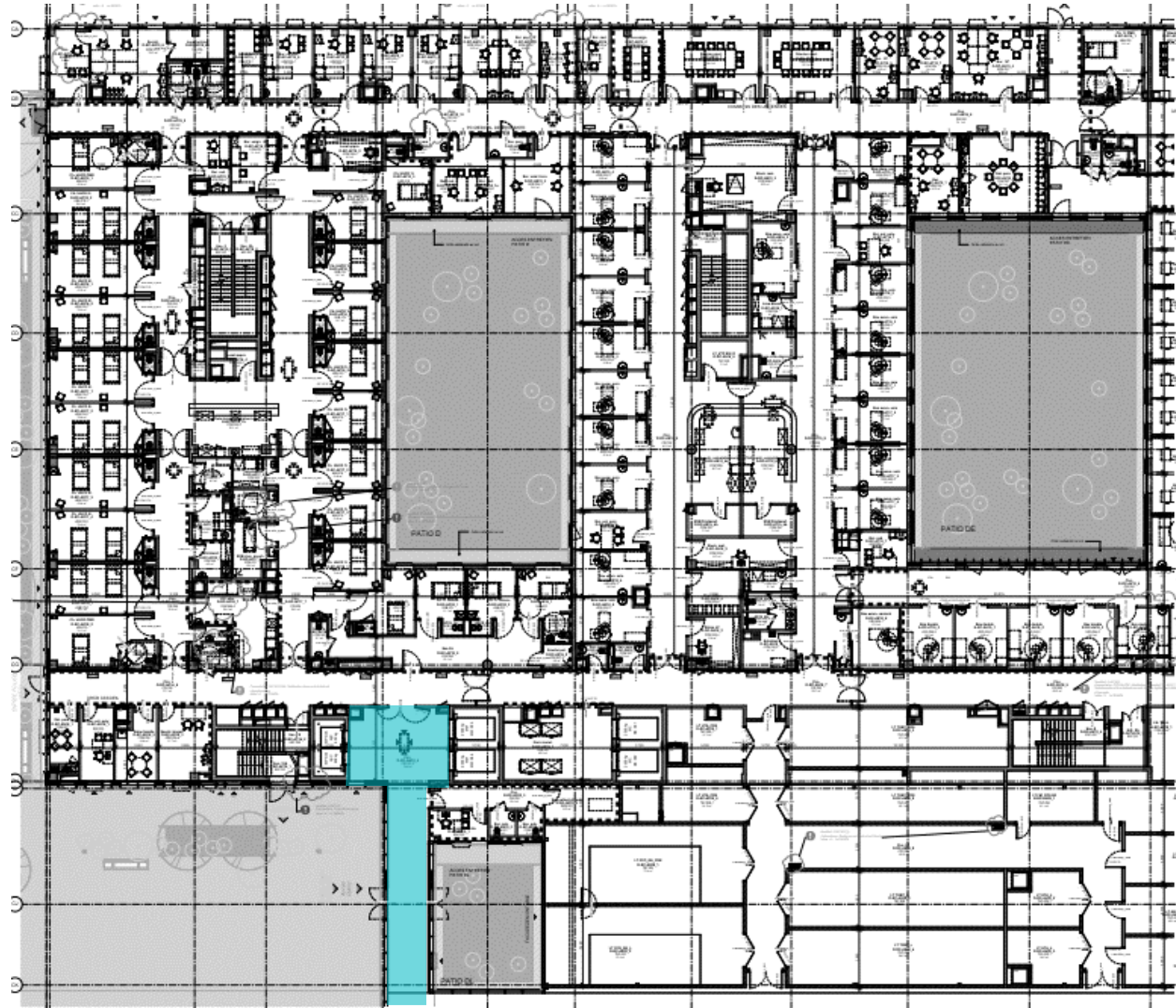
Focus Hall bâtiment A



Focus hall C – Chambre mortuaire

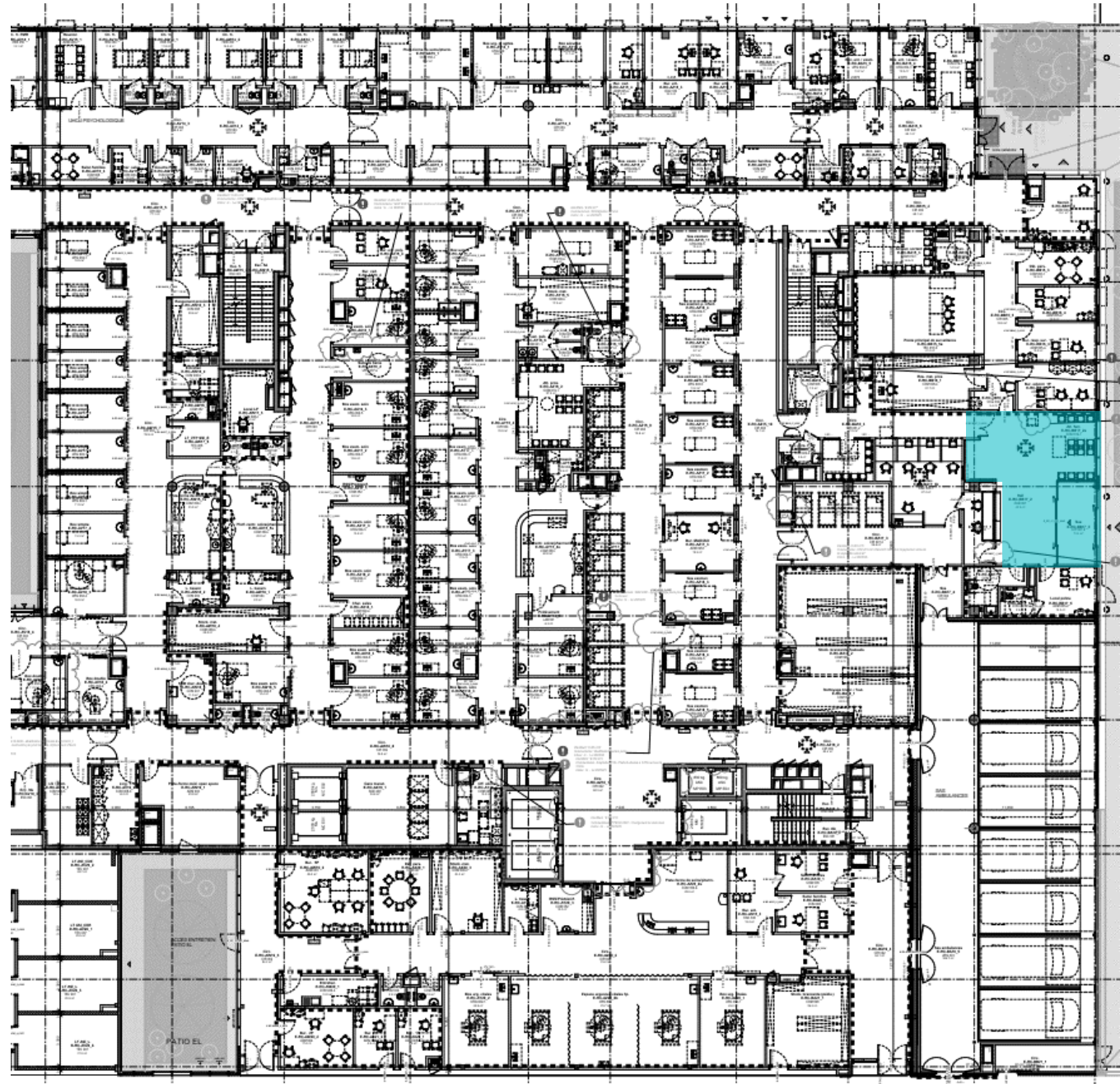


Focus hall D – Soins critiques



Focus hall E

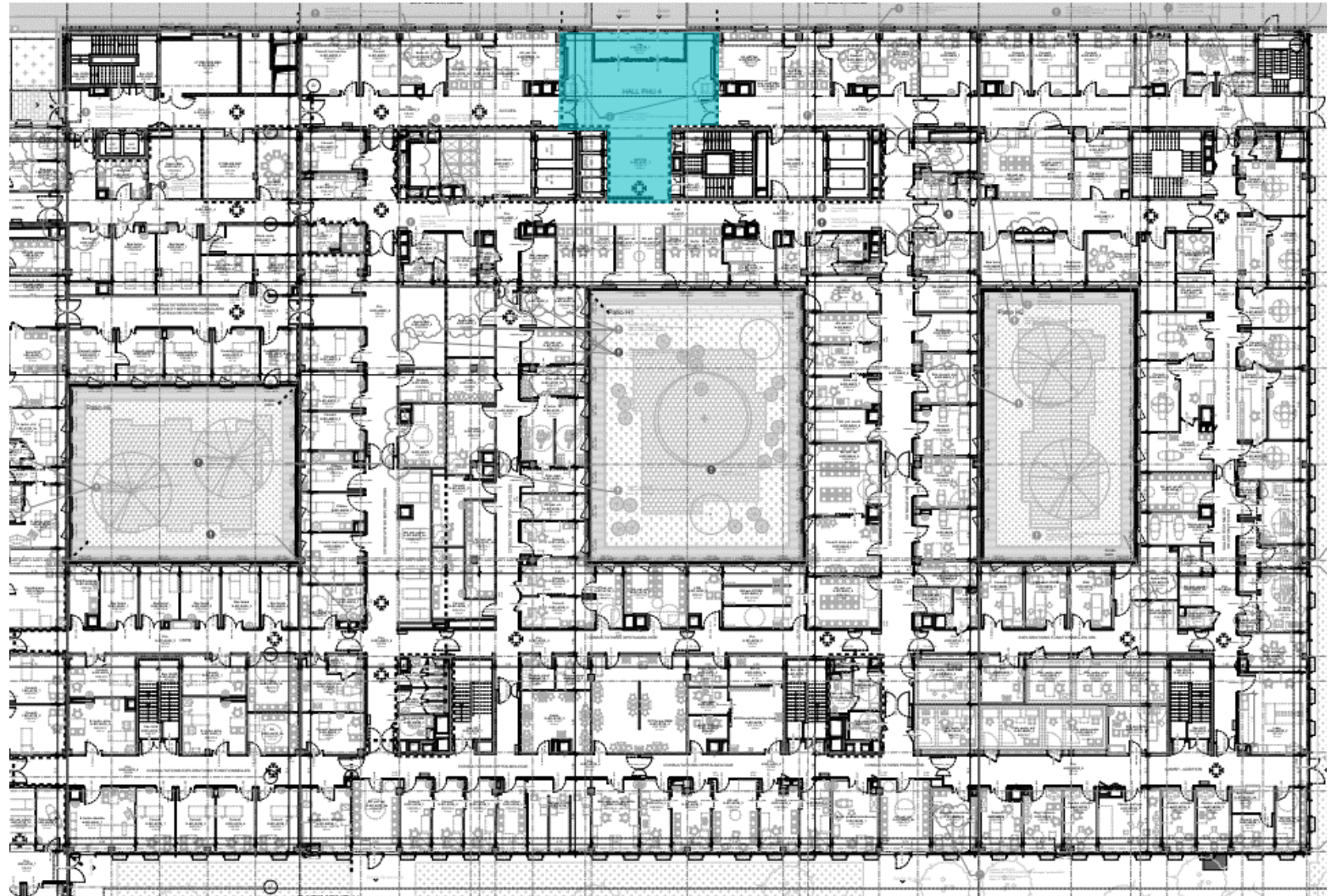
Urgences adultes



Focus hall G

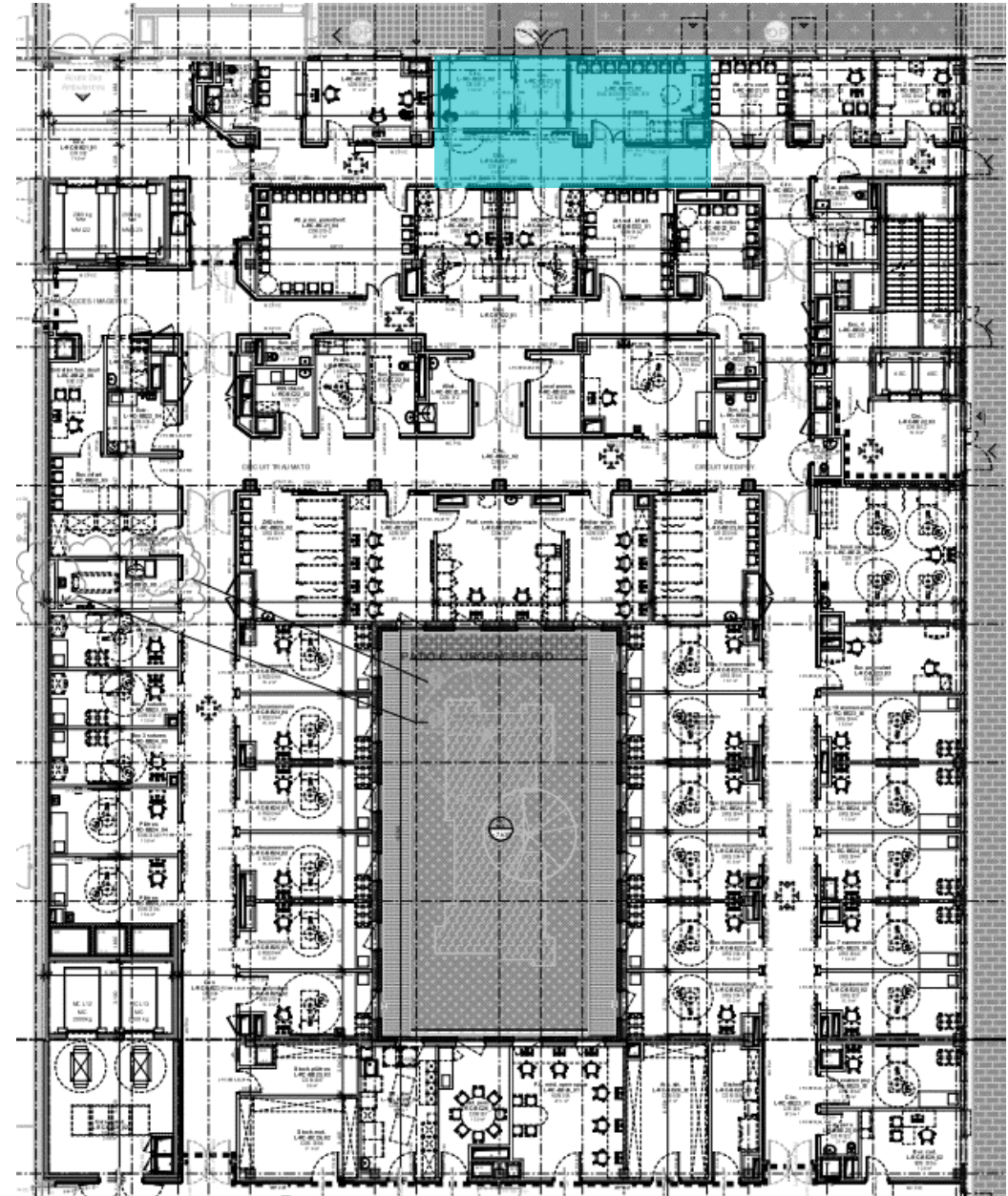


Focus hall plots H,I,J,K



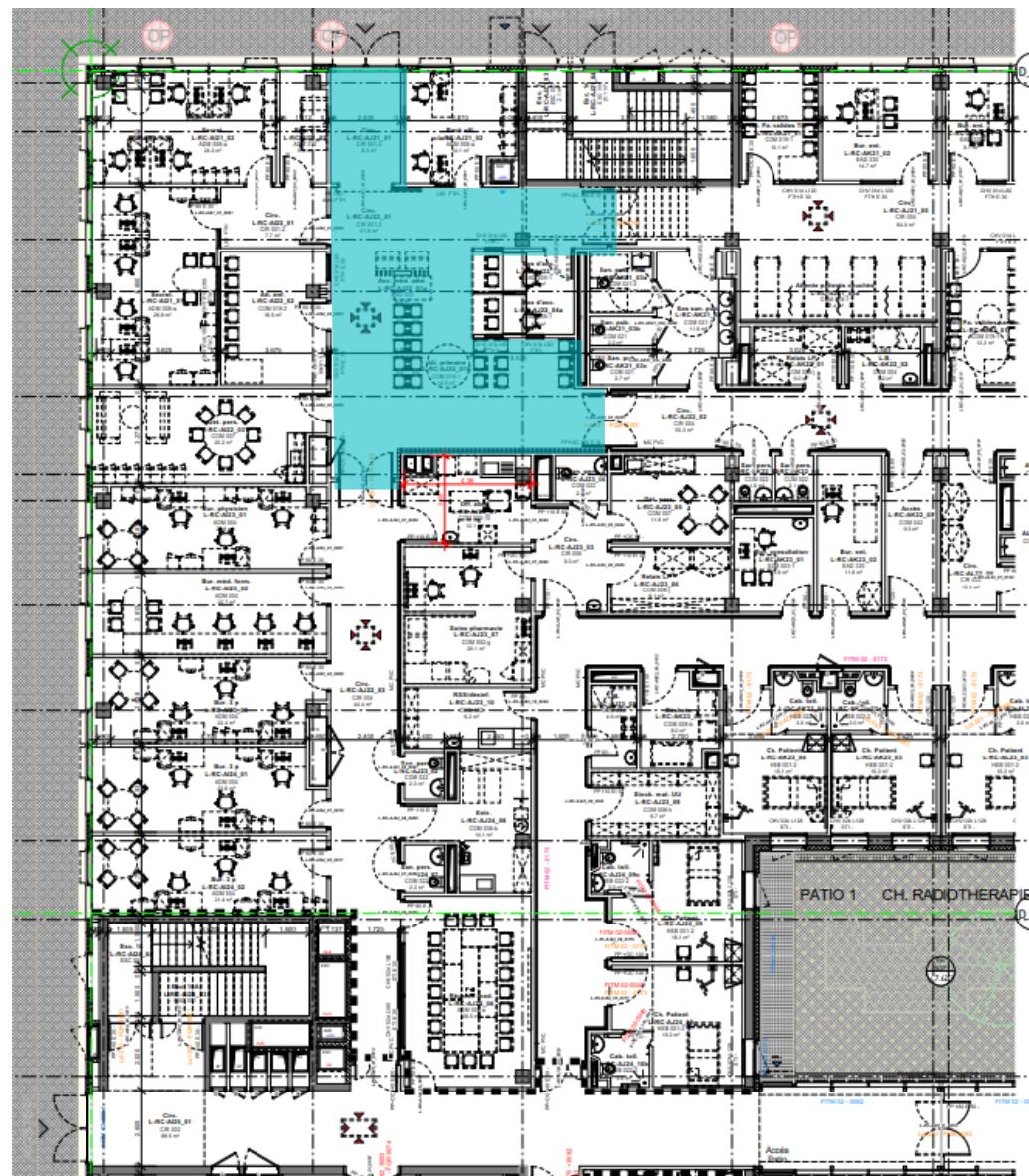
Focus hall L

Urgences pédiatriques

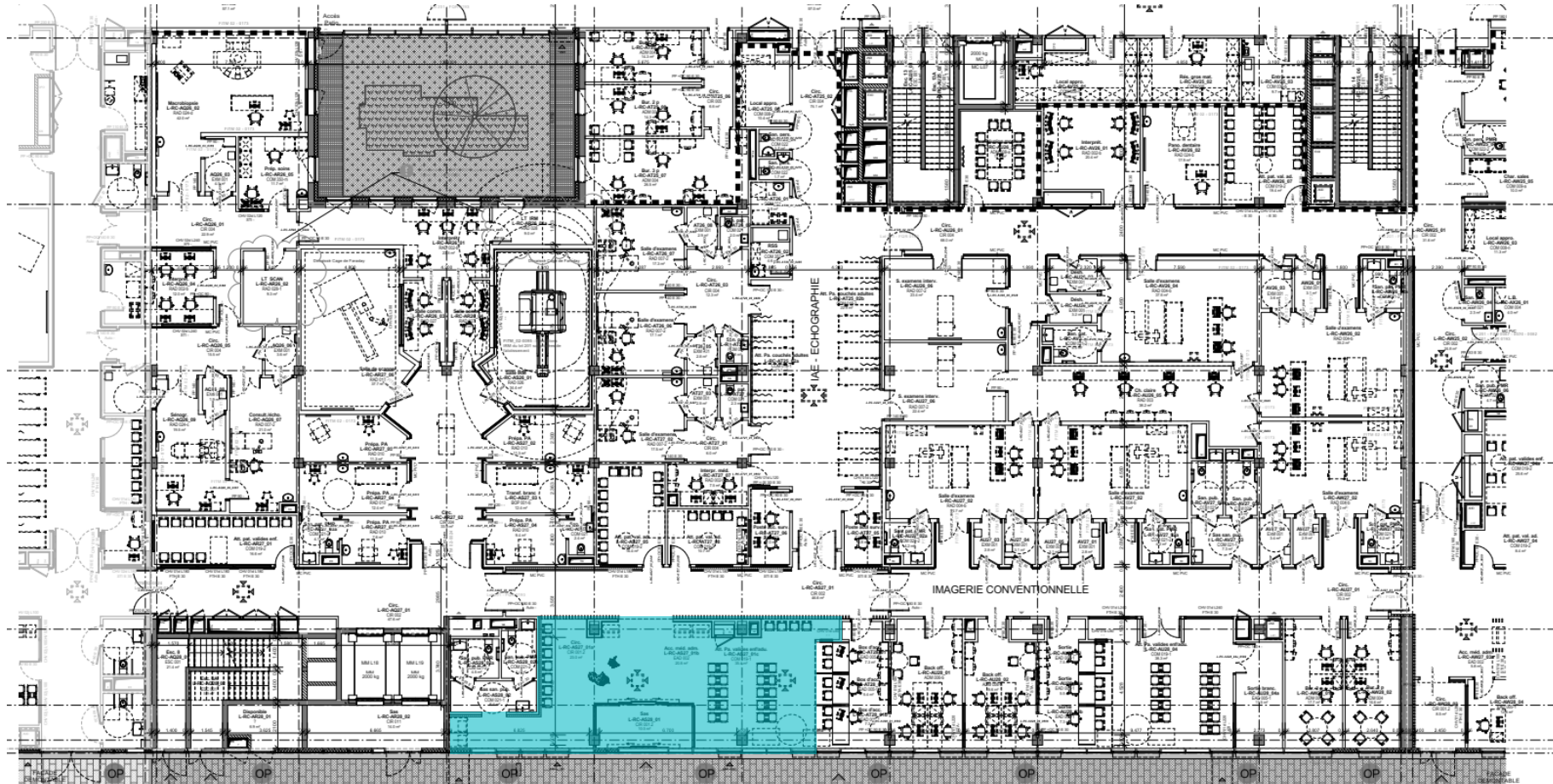


Focus hall L

Médecine nucléaire

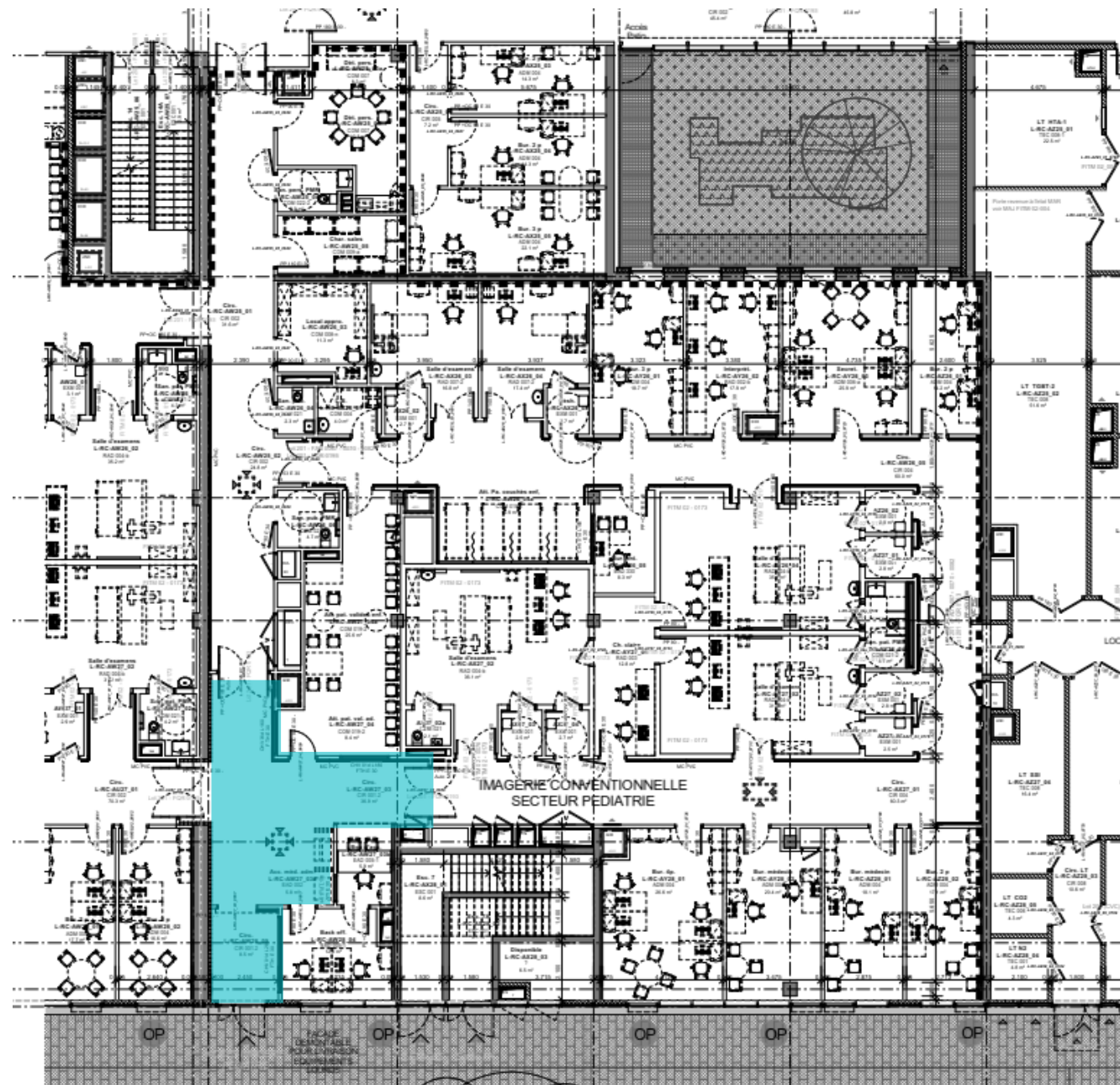


Focus hall L
Imagerie externe



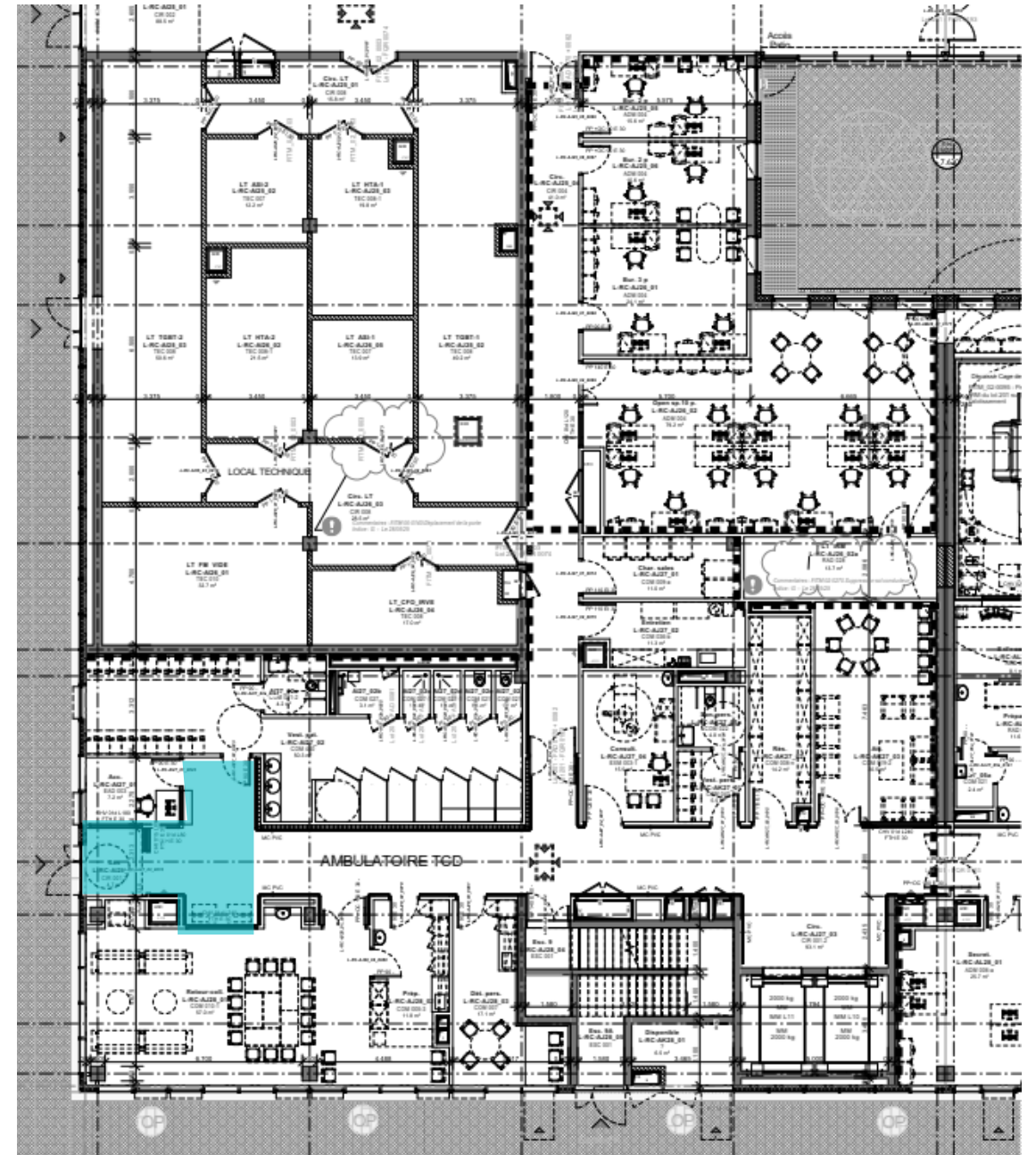
Focus hall L

Imagerie pédiatrique



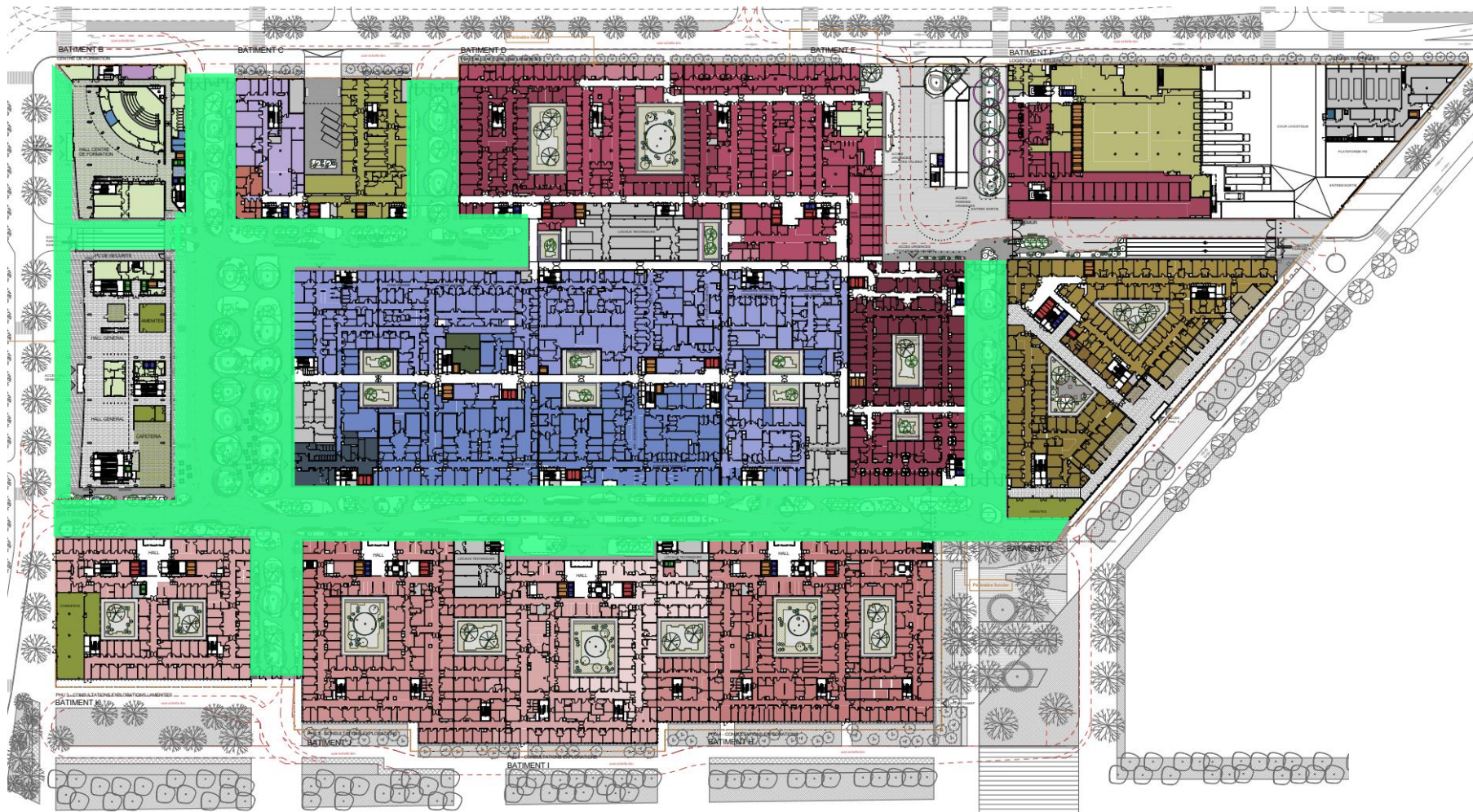
Focus hall L

Ambulatoire très courte durée





Espaces extérieures internes au site



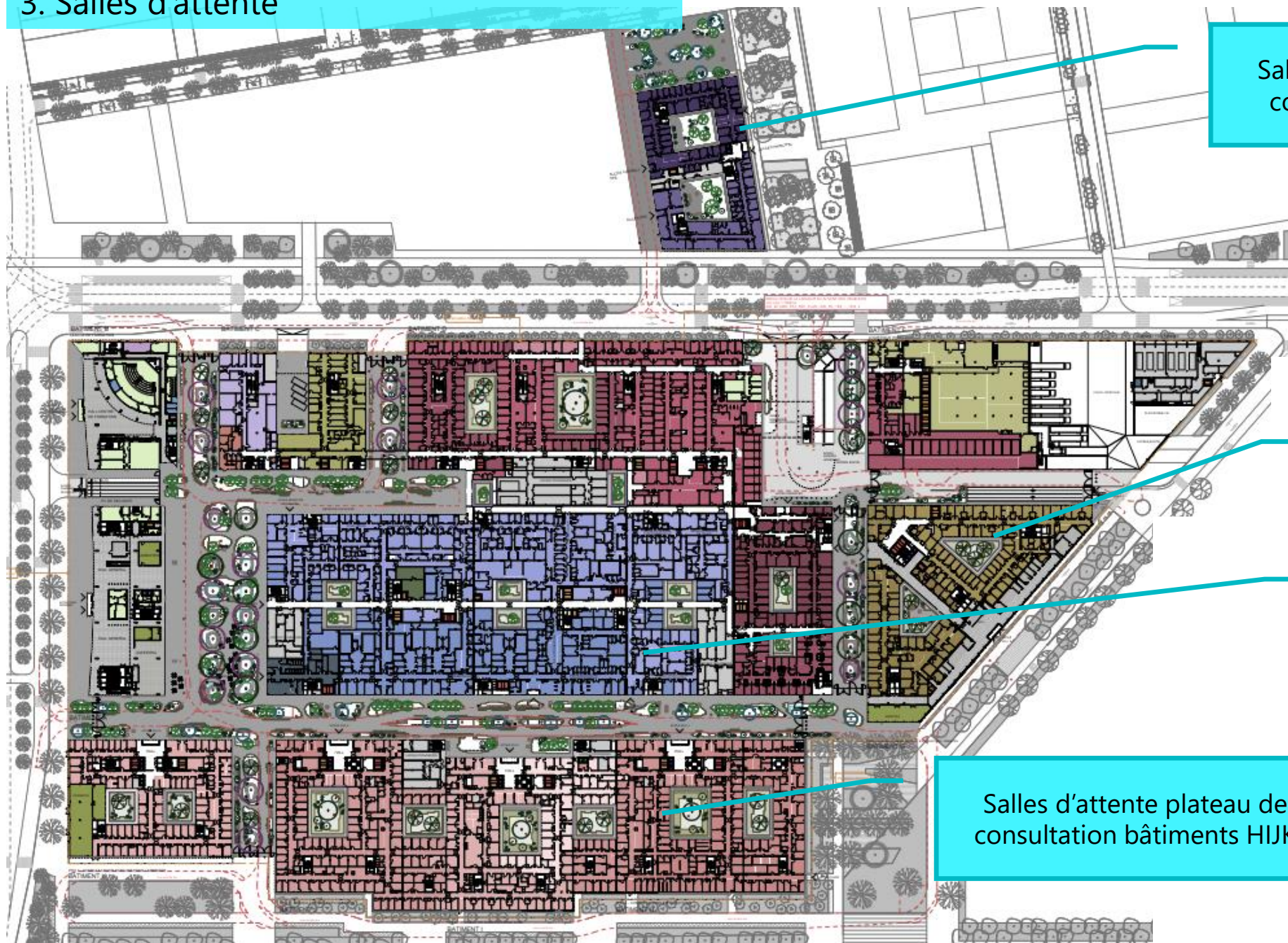
2. Espaces extérieurs internes au site

Rez-de-chaussée



Salles d'attente (tranche optionnelle)

3. Salles d'attente



Salles d'attente plateau de
consultation bâtiment O

Salles d'attente plateau de
consultation bâtiment G

Salles d'attente plateau
d'imagerie et médecine
nucléaire

Salles d'attente plateau de
consultation bâtiments HIJK

Rez-de-chaussée



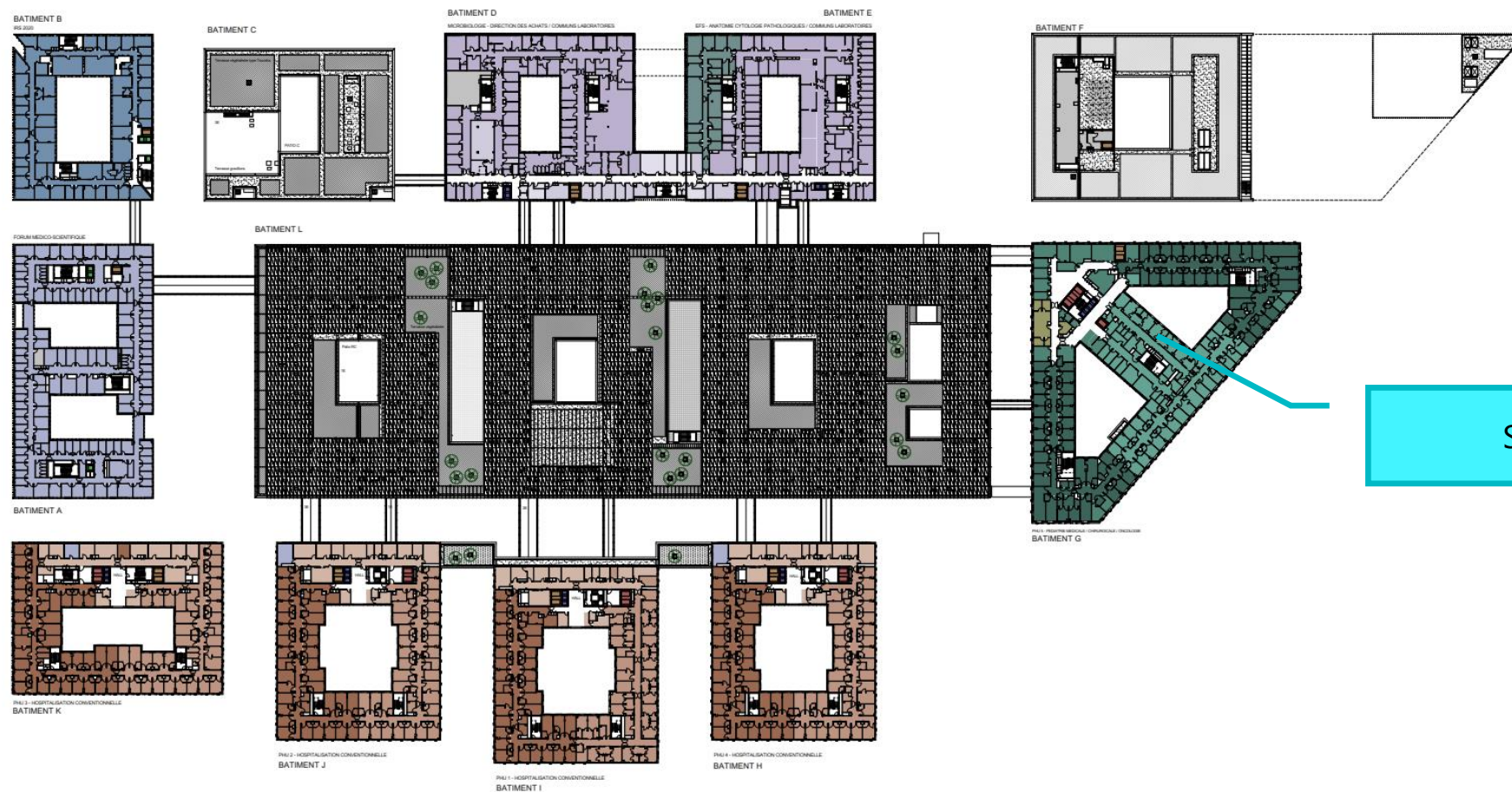
Ambulatoire gynéco-
obstétrique

3. Salles d'attente

R+2



R+3



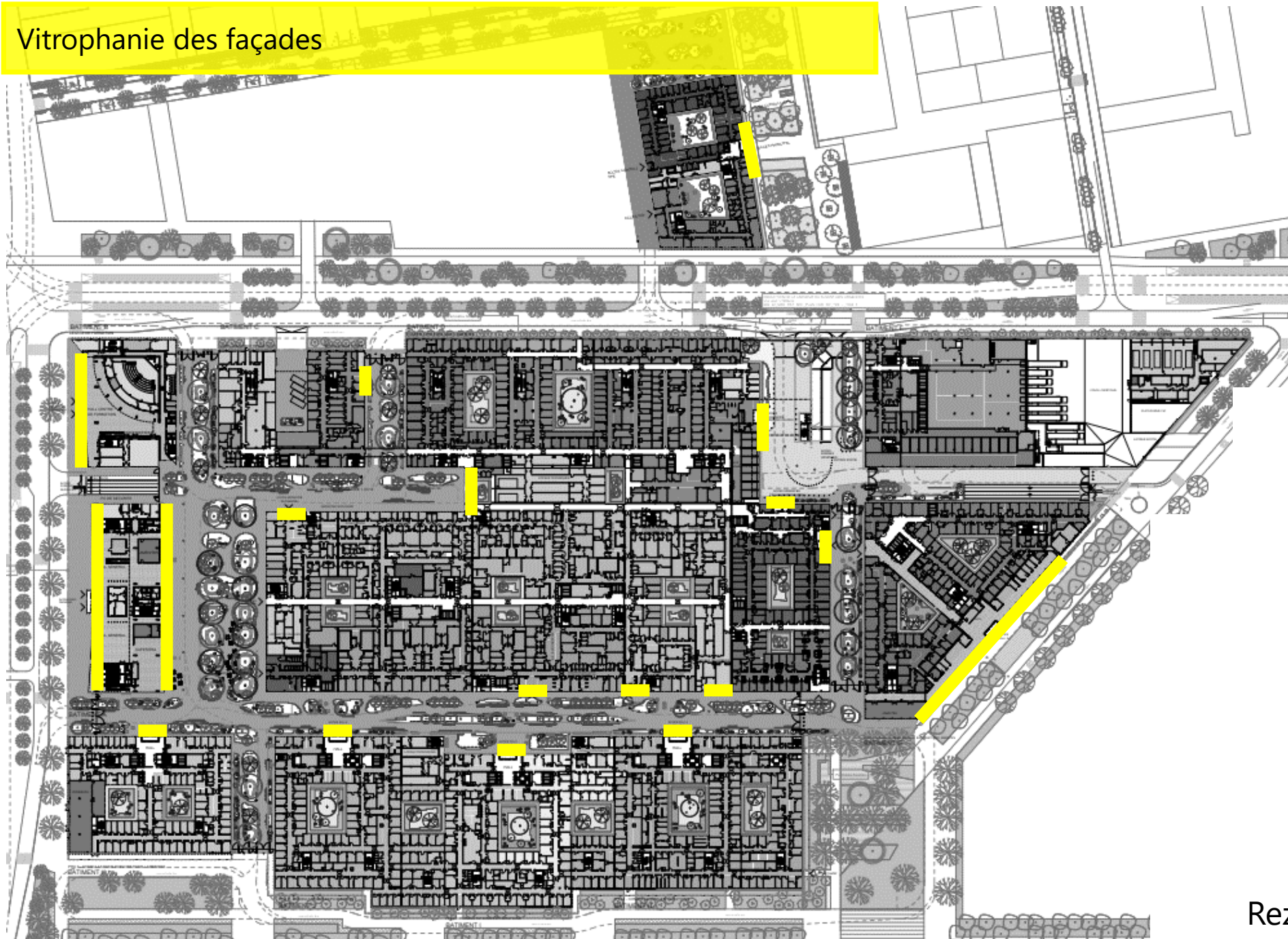
Salon parents

R+4



04. Vitrophanie façade

Vitrophanie des façades



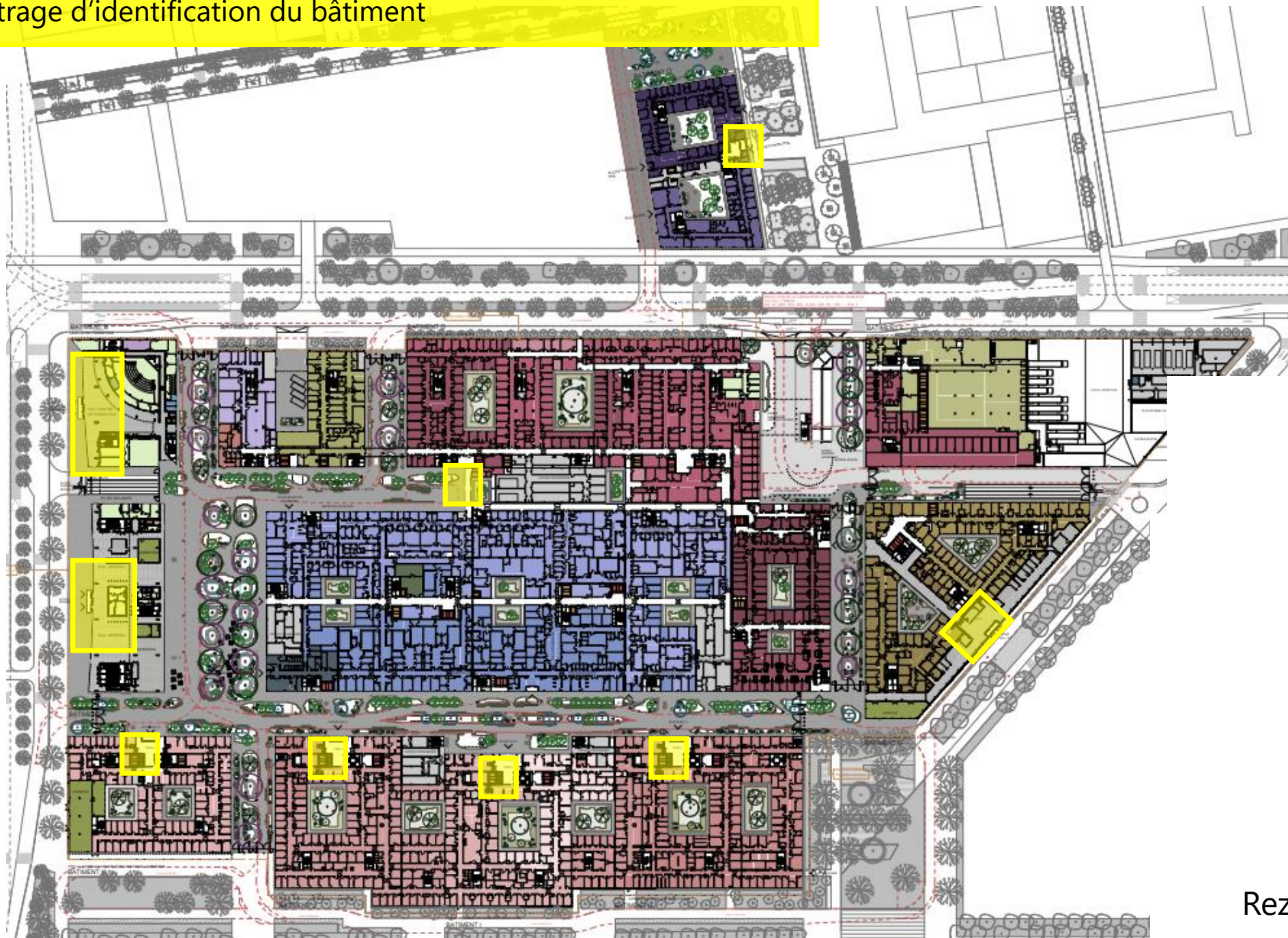
Rez-de-chaussée



05.

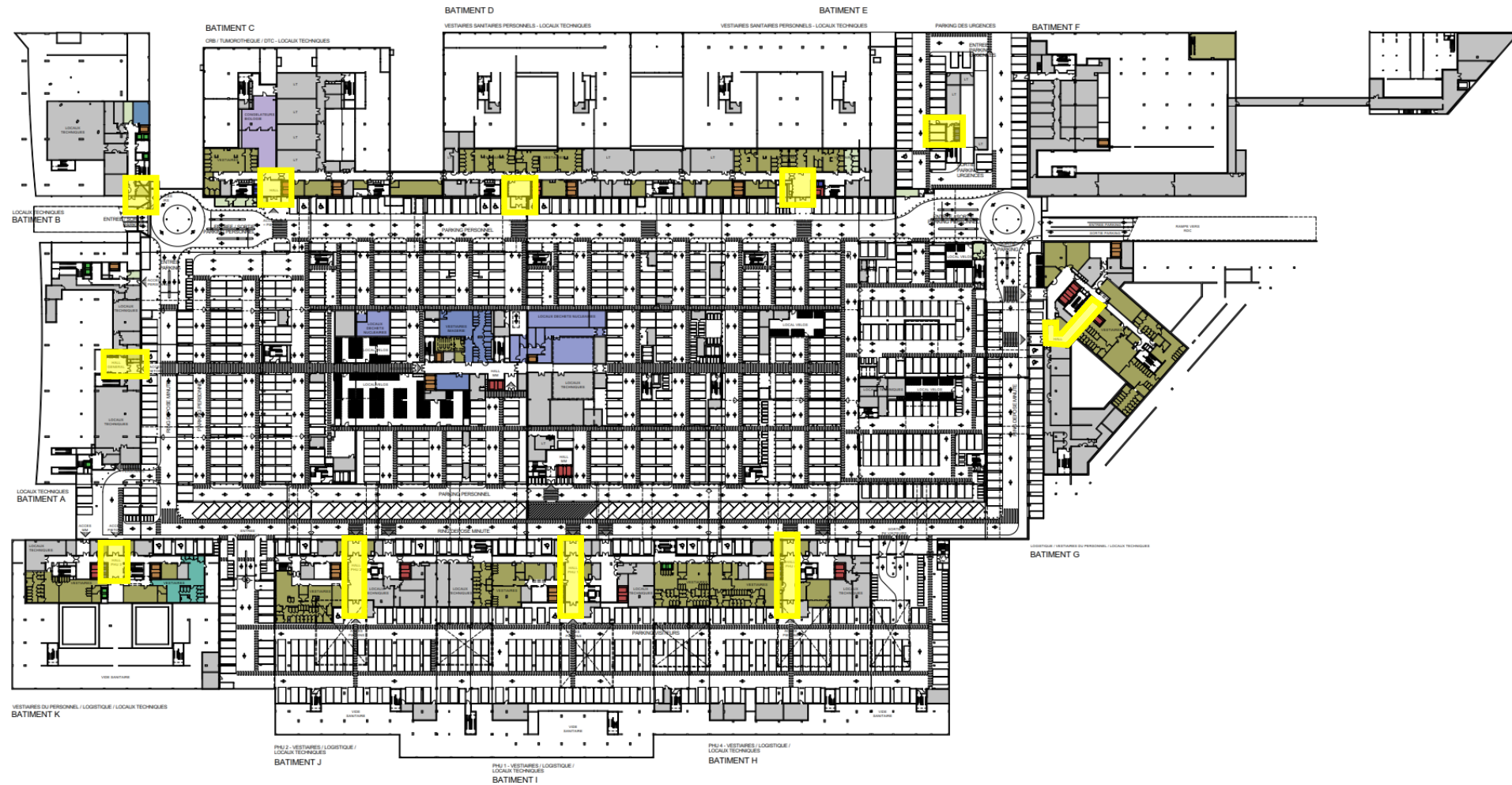
Lettrage d'identification du bâtiment

Lettrage d'identification du bâtiment



Rez-de-chaussée

Lettrage d'identification du bâtiment



Sous-sol